

WORKFORCE DEVELOPMENT

What is the Permian Strategic Partnership?

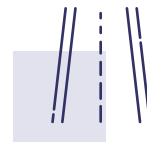
The Permian Strategic Partnership (PSP) is an unprecedented coalition of 19 energy companies that have come together to address current and future challenges surrounding the responsible development of the vast oil and natural gas resources of the Permian Basin. The PSP is working in collaboration with elected officials, local leaders, community organizations and citizens from West Texas and Southeast New Mexico to develop solutions to strengthen local communities.

In 2018, the PSP completed an initial analysis and fact-gathering stage, including a survey of local residents, which identified the most urgent needs of the region.

Based on that analysis, PSP is focused on the following five areas:



Improved
schools



Safer
roads



Affordable
housing



Quality
healthcare



Workforce
development

Permian Basin by the Numbers

Expected impact by 2025

~50k
local
new jobs

40% of U.S. domestic oil production will come from the Permian Basin,
compared to **33%** today

>\$10B
in annual severance tax,
compared to

~\$50B
yearly in oil field
capital
expenditure,

compared to
~\$40B
today

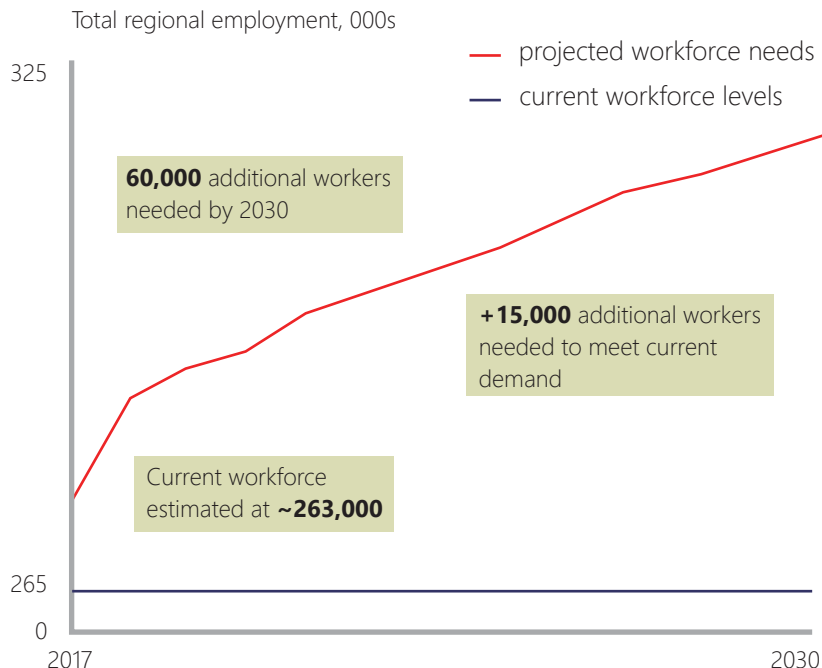


→ **~\$2B**
in 2016, a significant increase
in state revenue for both Texas
and New Mexico

Why Workforce Development?

Workforce development is a key area of focus for the PSP. In 2018, the Bureau of Labor Statistics reported there was no region in the United States that could match the Permian Basin for its percentage increase in new jobs. As of March 2018, there were approximately **15,000 positions that remained unfilled** across the Permian representing close to **6%** of the region's workforce of over a quarter of a million.

By 2025, continued industry growth and a shift toward a resident rather than rotational workforce in the Basin will require **~50,000 more workers**, roughly half in the energy industry and the rest to meet the needs of other industries and services across the local and regional economy.



15,000

positions that remain unfilled,
as of March 2018

close
to **6%**

of the region's workforce of
over a quarter of a million

~50,000

more workers needed in the
Basin, by 2025

What We're Doing

The PSP Workforce Development Committee is partnering with local school districts, community colleges, state and local officials, and other civil society organizations to attract, develop, and retain workforce and their families across the Permian Basin.

By supporting initiatives that increase the labor force, expand technical education and training opportunities, and improve the availability of key services that a thriving workforce depends on, the PSP Workforce Development Committee will help enable fulfillment of the region's economic potential and improve quality of life for its residents.

Questions?

For more information on the Permian Strategic Partnership and how we are supporting workforce development in the region, please contact:

Paula Jackson

paula@permianpartnership.org

